

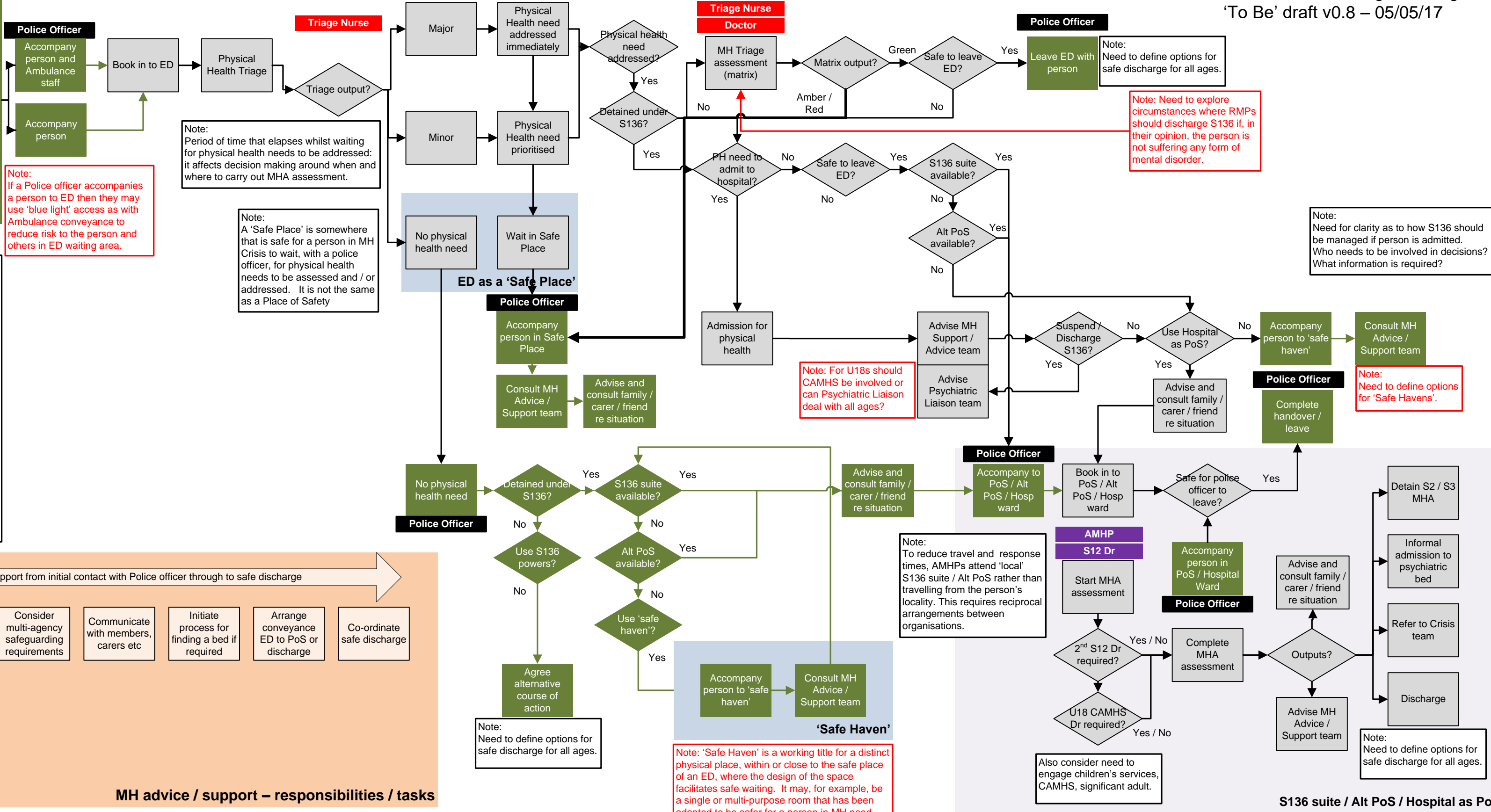
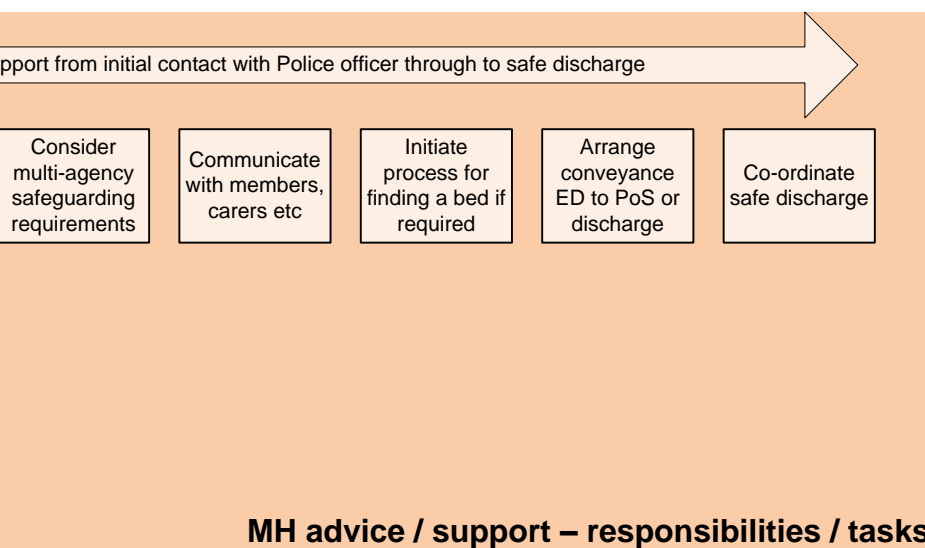
# Hospital Emergency Department

# MH Crisis / S136 VSM ED and PoS to discharge – All Age 'To Be' draft v0.8 – 05/05/17

Note:  
1. The person has been detained under S136; an Ambulance has attended; physical health needs require ED intervention.  
2. The police officer has decided not to use S136 powers; an Ambulance has attended; physical health needs require ED intervention.  
3. The person has been detained under S136; an Ambulance has not attended; it is not clear whether there are physical health needs.  
4. The police officer has decided not to use S136 powers; an Ambulance has not attended; it is not clear whether there are physical health needs.

Note:  
If a Police officer accompanies a person to ED then they may use 'blue light' access as with Ambulance conveyance to reduce risk to the person and others in ED waiting area.

Note:  
1. Police officer(s) have been communicating regularly with MH Advice / Support team from initial contact with the person.  
2. The Ambulance Service has, generally, attended and assessed physical health need as requiring ED intervention.  
3. The person has, generally, been conveyed to ED in an ambulance or other appropriate transport.  
4. ED has been forewarned of the person's impending arrival by Ambulance Service or MH Advice / Support team.  
5. Psychiatric Liaison team has been advised of the person's impending arrival by MH Advice / Support team.  
6. If the person is under 18 years of age then CAMHS and, if appropriate, Children's Social Services have been made aware and mobilised.



S136 suite / Alt PoS / Hospital as PoS